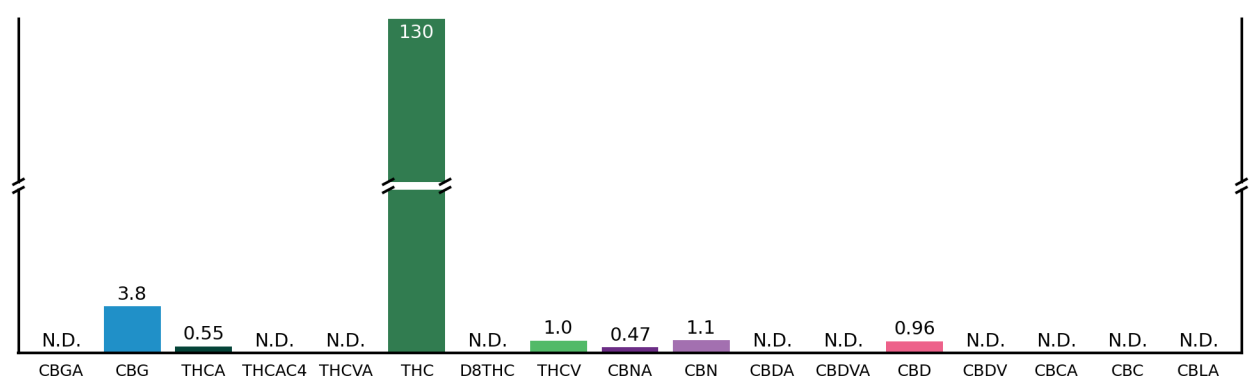


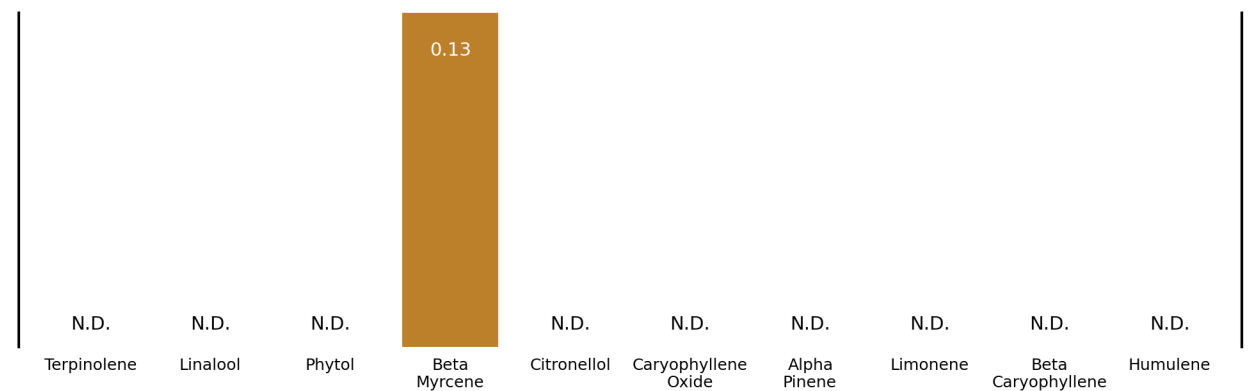
## 1/29/16 OG Semi 125mg

Customer: Cali Gold Bars		Test Site: SHL Berkeley		Instrument: HPLC-DAD-MS	
Test: Cannabinoid, Terpene Potency		Sample Type: Edible		Customer's ID:	
Submitted: 2016-02-04		Analyzed: 2016-02-07		Reported: 2016-02-08	
				Sample ID: EDB263-1	
				Sample Mass: 2.266 g	


### Cannabinoids as Milligrams per Package



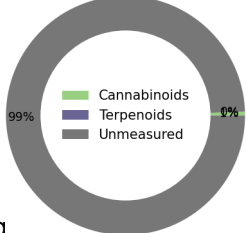
### Terpenes as Milligrams per Package



### Sample Overview



Cannabis Infused Product



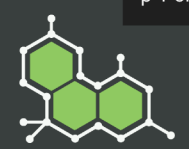
1/29/16 OG Semi 125mg

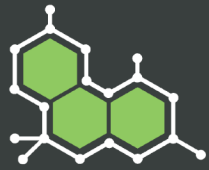
### Sample Details

Pesticides:	Not Requested
Mycotoxins:	Not Requested
Servings per Package:	5.0
Package Mass (g):	27.4885

For more information about this report, including how to calculate your own approximate post-decarboxylate THC and CBD values, please visit [www.steepphilllab.com/FAQ](http://www.steepphilllab.com/FAQ)

This report and all information herein shall not be reproduced, except in its entirety, without the written consent of Steep Hill Halent. The report is for informational purposes only and should not be used to diagnose, treat, or prevent any medical related symptoms. Results are applicable only for samples tested, and for the specific tests conducted.





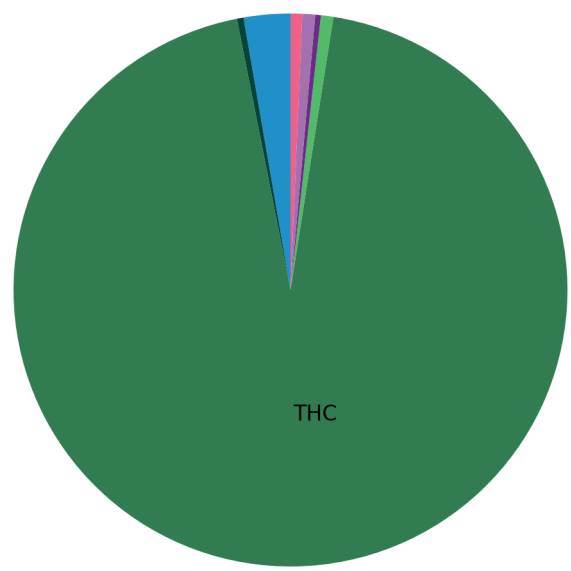
## 1/29/16 OG Semi 125mg

Customer: Cali Gold Bars		Test Site: SHL Berkeley		Instrument: HPLC-DAD-MS	
Test: Cannabinoid, Terpene Potency		Sample Type: Edible		Customer's ID:	
Sample ID: EDB263-1		Submitted: 2016-02-04		Analyzed: 2016-02-07	
Reported: 2016-02-08		Sample Mass: 2.266 g			

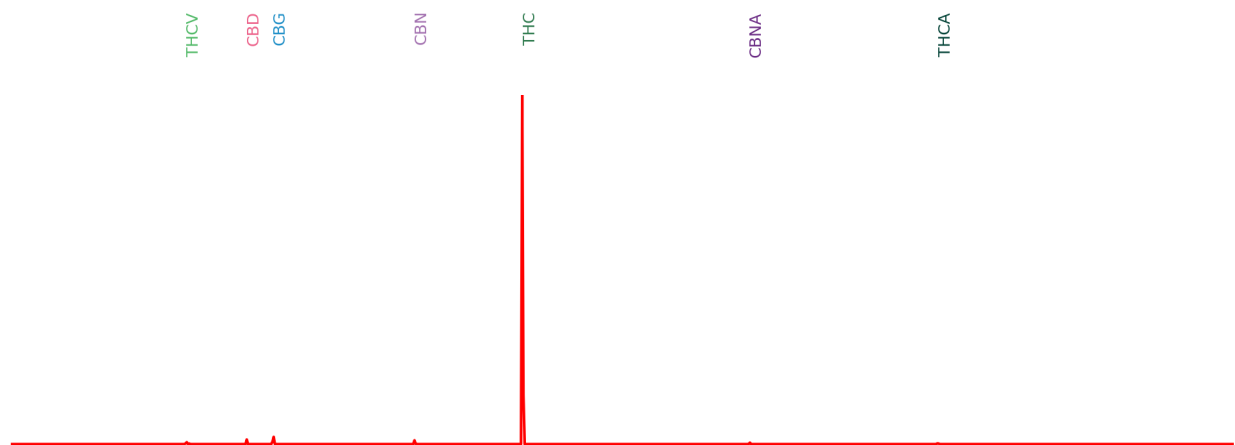
### Cannabinoid Profile

Compound	mg/pkg	mg/serving
CBGA	N.D.	N.D.
CBG	3.8	0.77
THCA	0.55	0.11
THCAC4	N.D.	N.D.
THCVA	N.D.	N.D.
D9THC	130	27
D8THC	N.D.	N.D.
THCV	1.0	0.20
CBNA	0.47	0.093
CBN	1.1	0.21
CBDA	N.D.	N.D.
CBDVA	N.D.	N.D.
CBD	0.96	0.19
CBDV	N.D.	N.D.
CBCA	N.D.	N.D.
CBC	N.D.	N.D.
CBLA	N.D.	N.D.

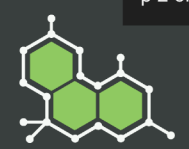
### Fractions of Measured Cannabinoids

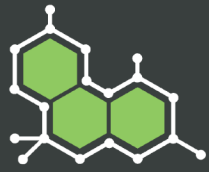


### Calculated Liquid Chromatogram



This report and all information herein shall not be reproduced, except in its entirety, without the written consent of Steep Hill Halent. The report is for informational purposes only and should not be used to diagnose, treat, or prevent any medical related symptoms. Results are applicable only for samples tested, and for the specific tests conducted.



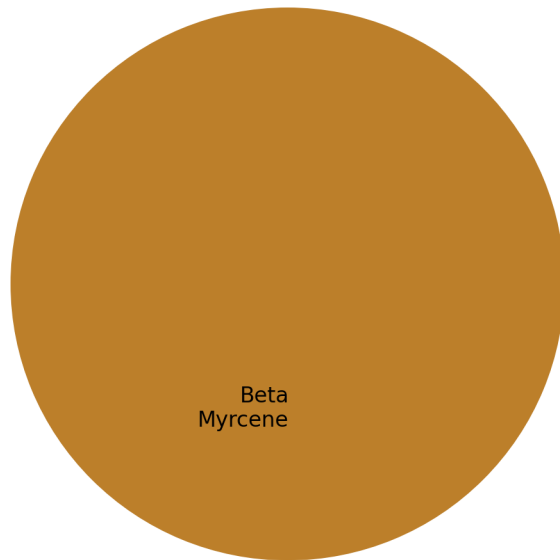


## 1/29/16 OG Semi 125mg

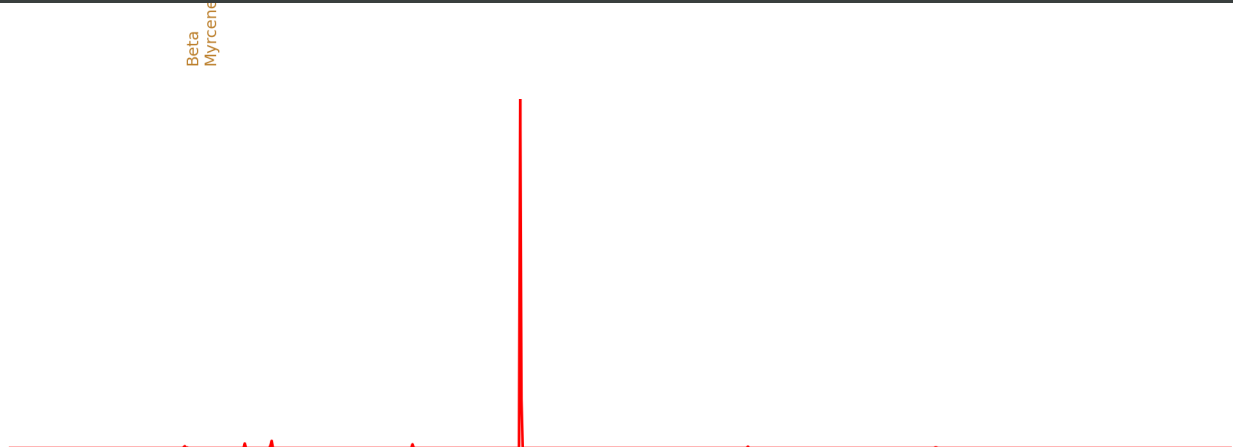
Customer: Cali Gold Bars		Test Site: SHL Berkeley		Instrument: HPLC-DAD-MS	
Test: Cannabinoid, Terpene Potency		Sample Type: Edible		Customer's ID:	
Submitted: 2016-02-04		Analyzed: 2016-02-07		Reported: 2016-02-08	
				Sample ID: EDB263-1	
				Sample Mass: 2.266 g	

Terpenoid Profile		
Compound	mg/pkg	mg/serving
Terpinolene	N.D.	N.D.
Linalool	N.D.	N.D.
Phytol	N.D.	N.D.
Beta Myrcene	0.13	0.027
Citronellol	N.D.	N.D.
Caryophyllene Oxide	N.D.	N.D.
Alpha Pinene	N.D.	N.D.
Limonene	N.D.	N.D.
Beta Caryophyllene	N.D.	N.D.
Alpha Humulene	N.D.	N.D.

### Fractions of Measured Terpenes



### Calculated Liquid Chromatogram



This report and all information herein shall not be reproduced, except in its entirety, without the written consent of Steep Hill Halent. The report is for informational purposes only and should not be used to diagnose, treat, or prevent any medical related symptoms. Results are applicable only for samples tested, and for the specific tests conducted.

