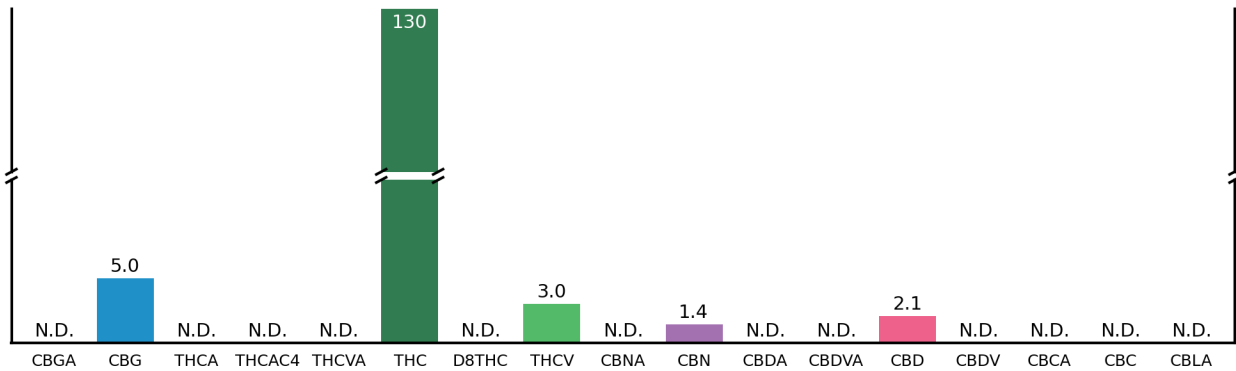


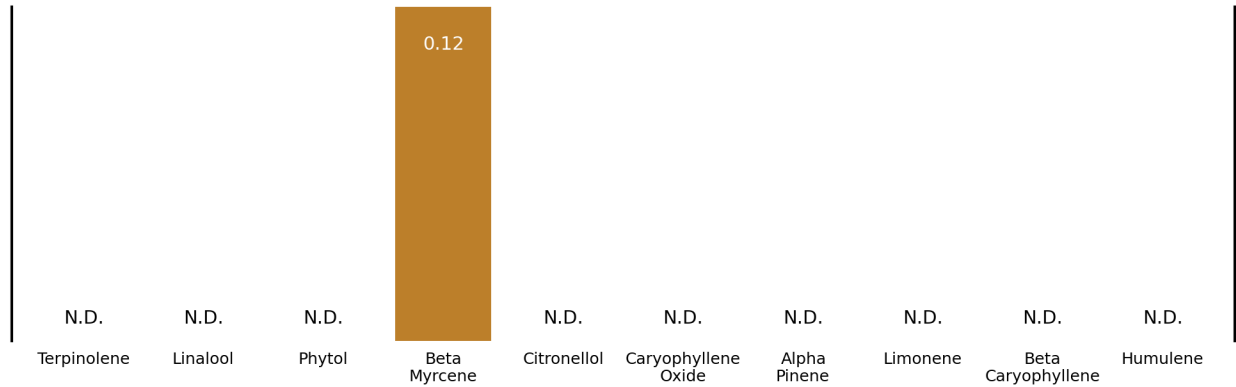
# Semi Dark Chocolate Sour Diesel 125mg

Customer: Cali Gold Bars		Test Site: SHL Oakland		Instrument: HPLC-DAD-MS	
Test: Cannabinoid, Terpene Potency		Sample Type: Edible	Customer's ID:		Sample ID: S139020 R2D1
Submitted: -		Analyzed: -		Reported: -	Sample Mass: 1.149 g


## Cannabinoids as Milligrams per Package



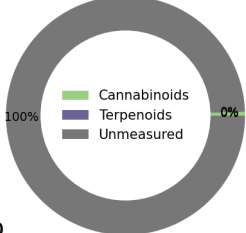
## Terpenes as Milligrams per Package



## Sample Overview



Cannabis Infused Product



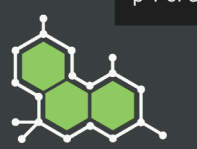
**Semi Dark Chocolate So**      **4-15**

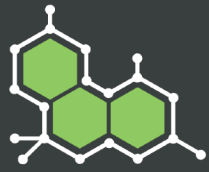
## Sample Details

Pesticides:	Not Detected
Mycotoxins:	Not Detected
Servings per Package:	10.0
Package Mass (g):	27.6152

For more information about this report, including how to calculate your own approximate post-decarboxylate THC and CBD values, please visit [www.steephilllab.com/FAQ](http://www.steephilllab.com/FAQ)

This report and all information herein shall not be reproduced, except in its entirety, without the written consent of Steep Hill Halent. The report is for informational purposes only and should not be used to diagnose, treat, or prevent any medical related symptoms. Results are applicable only for samples tested, and for the specific tests conducted.



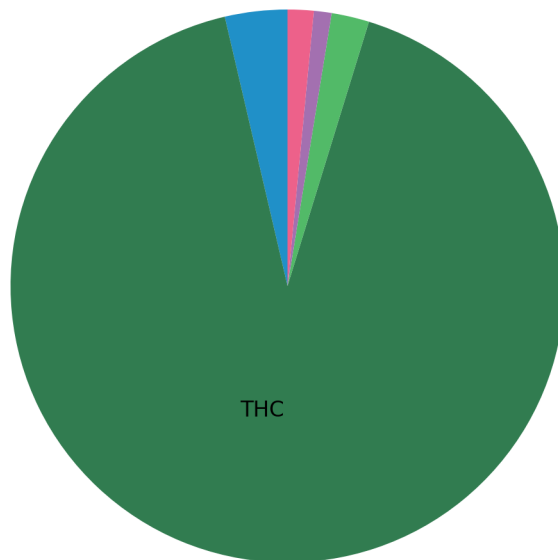


## Semi Dark Chocolate Sour Diesel 125mg

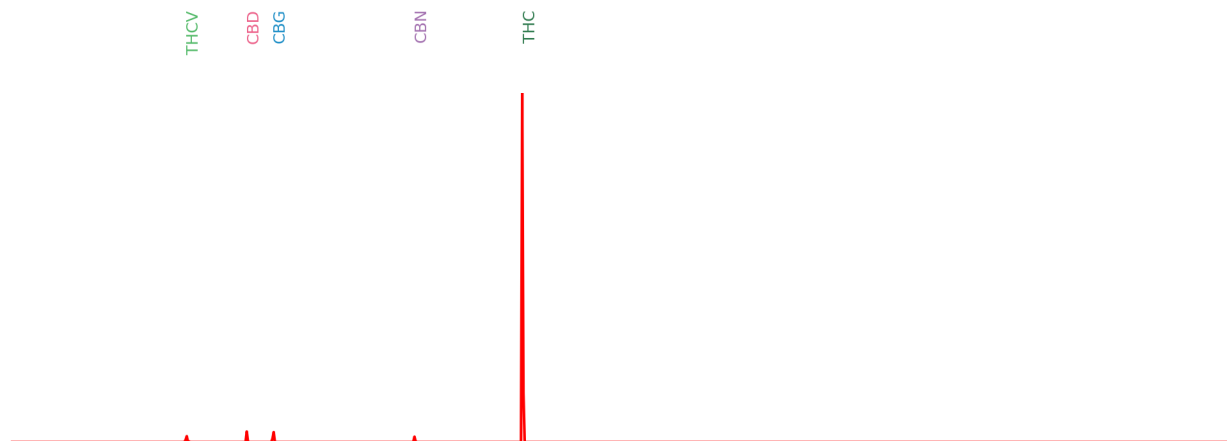
Customer: Cali Gold Bars		Test Site: SHL Oakland		Instrument: HPLC-DAD-MS	
Test: Cannabinoid, Terpene Potency		Sample Type: Edible		Customer's ID:	
Submitted: -		Analyzed: -		Sample ID: S139020 R2D1	
		Reported: -		Sample Mass: 1.149 g	

Cannabinoid Profile		
Compound	mg/pkg	mg/serving
CBGA	N.D.	N.D.
CBG	5.0	0.50
THCA	N.D.	N.D.
THCAC4	N.D.	N.D.
THCVA	N.D.	N.D.
D9THC	130	13
D8THC	N.D.	N.D.
THCV	3.0	0.30
CBNA	N.D.	N.D.
CBN	1.4	0.14
CBDA	N.D.	N.D.
CBDVA	N.D.	N.D.
CBD	2.1	0.21
CBDV	N.D.	N.D.
CBCA	N.D.	N.D.
CBC	N.D.	N.D.
CBLA	N.D.	N.D.

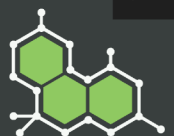
### Fractions of Measured Cannabinoids

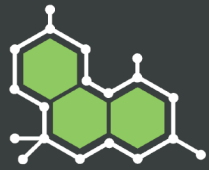


### Calculated Liquid Chromatogram



This report and all information herein shall not be reproduced, except in its entirety, without the written consent of Steep Hill Halent. The report is for informational purposes only and should not be used to diagnose, treat, or prevent any medical related symptoms. Results are applicable only for samples tested, and for the specific tests conducted.

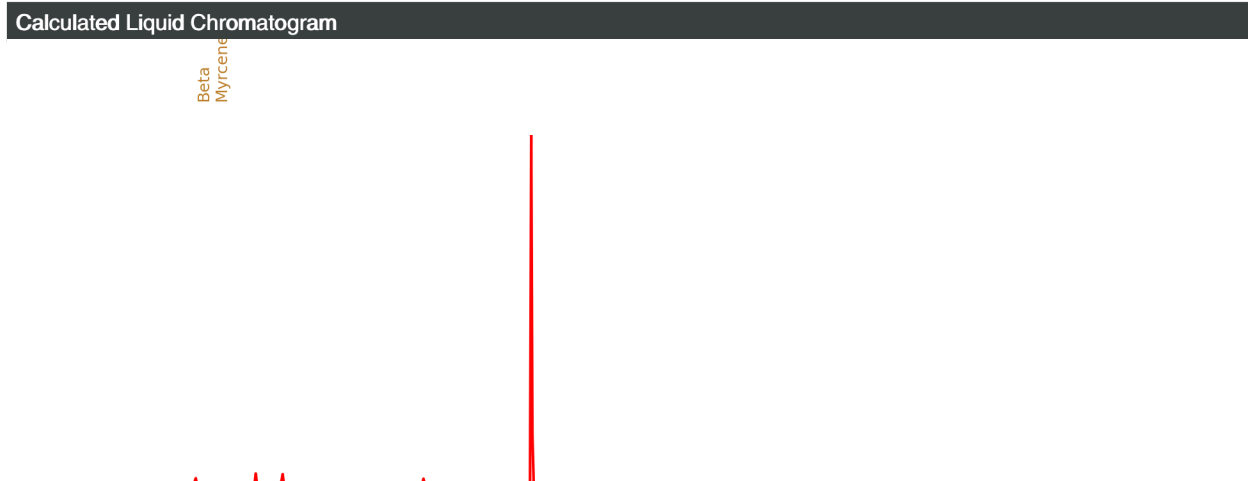
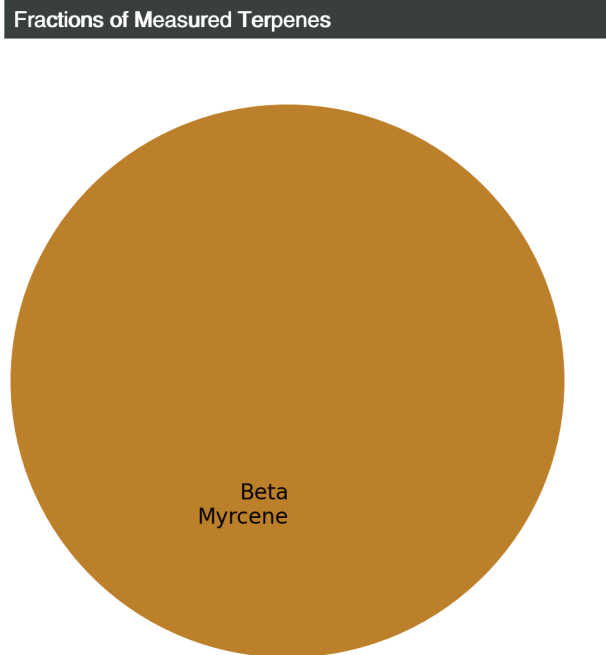




## Semi Dark Chocolate Sour Diesel 125mg

Customer: Cali Gold Bars		Test Site: SHL Oakland		Instrument: HPLC-DAD-MS	
Test: Cannabinoid, Terpene Potency		Sample Type: Edible	Customer's ID:		Sample ID: S139020 R2D1
Submitted: -		Analyzed: -		Reported: -	Sample Mass: 1.149 g

Terpenoid Profile		
Compound	mg/pkg	mg/serving
Terpinolene	N.D.	N.D.
Linalool	N.D.	N.D.
Phytol	N.D.	N.D.
Beta Myrcene	0.12	0.012
Citronellol	N.D.	N.D.
Caryophyllene Oxide	N.D.	N.D.
Alpha Pinene	N.D.	N.D.
Limonene	N.D.	N.D.
Beta Caryophyllene	N.D.	N.D.
Alpha Humulene	N.D.	N.D.



This report and all information herein shall not be reproduced, except in its entirety, without the written consent of Steep Hill Halent. The report is for informational purposes only and should not be used to diagnose, treat, or prevent any medical related symptoms. Results are applicable only for samples tested, and for the specific tests conducted.

