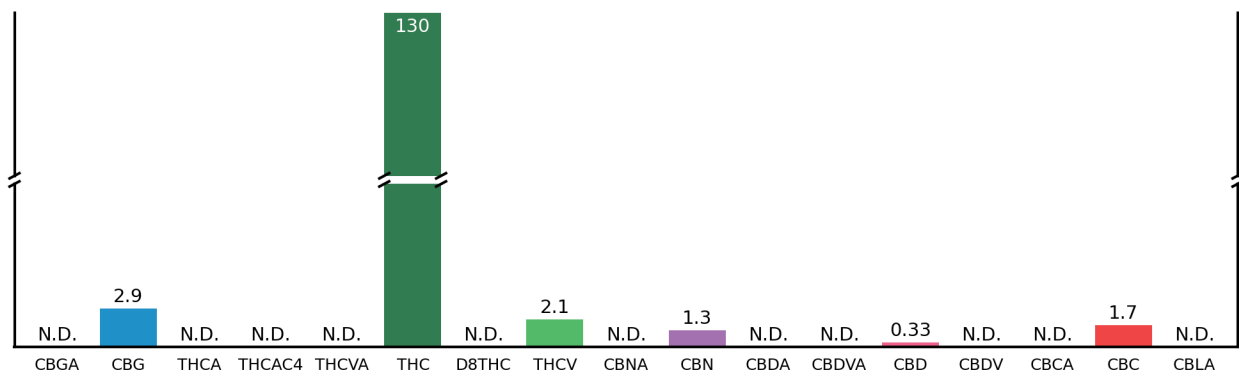


## 8/11/15 - OG Kush Semi Dark 125mg

Customer: Cali Gold Bars		Test Site: SHL Berkeley		Instrument: HPLC-DAD-MS	
Test: Cannabinoid, Terpene Potency		Sample Type: Edible	Customer's ID:		Sample ID: S233022
Submitted: 2015-08-21		Analyzed: 2015-08-23		Reported: 2015-08-26	
				Sample Mass: 2.003 g	

### Cannabinoids as Milligrams per Package



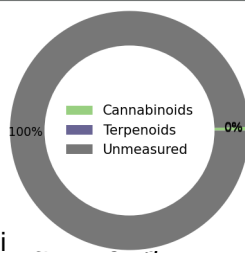
### Terpenes as Milligrams per Package

None Detected

#### Sample Overview



8/11/15 - OG Kush Semi

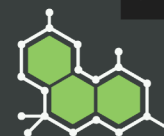


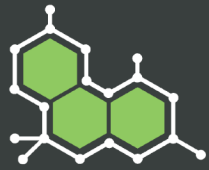
#### Sample Details

Pesticides:	Not Requested
Mycotoxins:	Not Requested
Servings per Package:	10.0
Package Mass (g):	27.1324

For more information about this report, including how to calculate your own approximate post-decarboxylate THC and CBD values, please visit [www.steepphilllab.com/FAQ](http://www.steepphilllab.com/FAQ)

This report and all information herein shall not be reproduced, except in its entirety, without the written consent of Steep Hill Halent. The report is for informational purposes only and should not be used to diagnose, treat, or prevent any medical related symptoms. Results are applicable only for samples tested, and for the specific tests conducted.





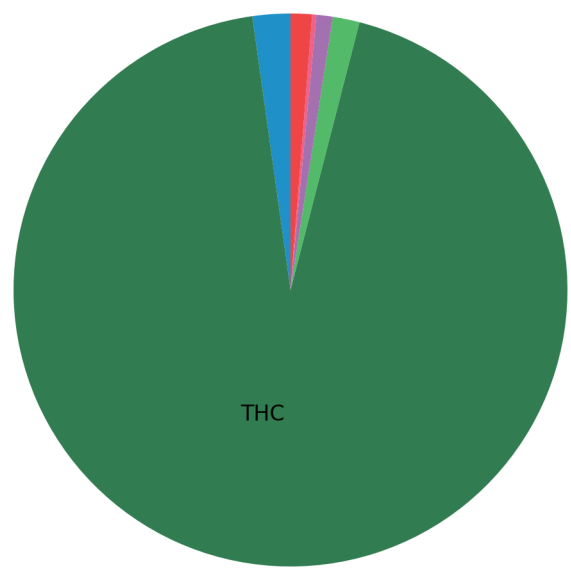
## 8/11/15 - OG Kush Semi Dark 125mg

Customer: Cali Gold Bars		Test Site: SHL Berkeley		Instrument: HPLC-DAD-MS	
Test: Cannabinoid, Terpene Potency		Sample Type: Edible		Customer's ID:	
Submitted: 2015-08-21		Analyzed: 2015-08-23		Reported: 2015-08-26	
				Sample ID: S233022	
				Sample Mass: 2.003 g	

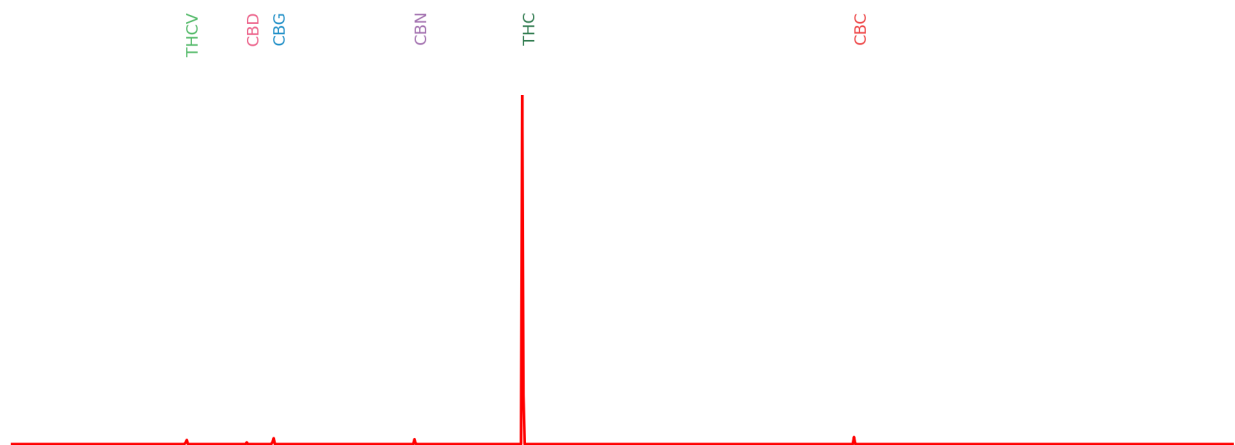
### Cannabinoid Profile

Compound	mg/pkg	mg/serving
CBGA	N.D.	N.D.
CBG	2.9	0.29
THCA	N.D.	N.D.
THCAC4	N.D.	N.D.
THCVA	N.D.	N.D.
D9THC	130	13
D8THC	N.D.	N.D.
THCV	2.1	0.21
CBNA	N.D.	N.D.
CBN	1.3	0.13
CBDA	N.D.	N.D.
CBDVA	N.D.	N.D.
CBD	0.33	0.033
CBDV	N.D.	N.D.
CBCA	N.D.	N.D.
CBC	1.7	0.17
CBLA	N.D.	N.D.

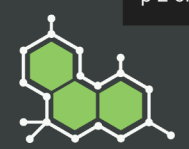
### Fractions of Measured Cannabinoids

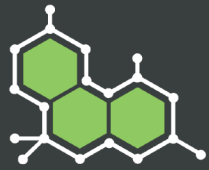


### Calculated Liquid Chromatogram



This report and all information herein shall not be reproduced, except in its entirety, without the written consent of Steep Hill Halent. The report is for informational purposes only and should not be used to diagnose, treat, or prevent any medical related symptoms. Results are applicable only for samples tested, and for the specific tests conducted.





## 8/11/15 - OG Kush Semi Dark 125mg

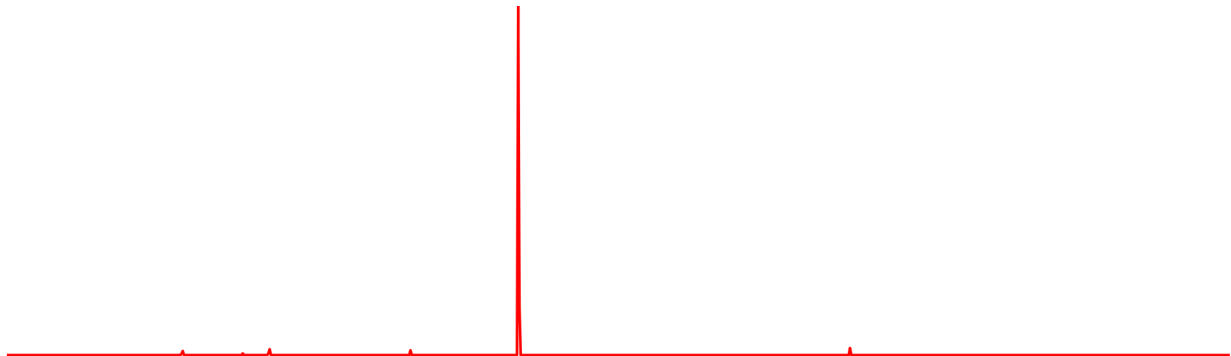
Customer: Cali Gold Bars		Test Site: SHL Berkeley		Instrument: HPLC-DAD-MS	
Test: Cannabinoid, Terpene Potency		Sample Type: Edible	Customer's ID:		Sample ID: S233022
Submitted: 2015-08-21		Analyzed: 2015-08-23	Reported: 2015-08-26		Sample Mass: 2.003 g

Terpenoid Profile		
Compound	mg/pkg	mg/serving
Terpinolene	N.D.	N.D.
Linalool	N.D.	N.D.
Phytol	N.D.	N.D.
Beta Myrcene	N.D.	N.D.
Citronellol	N.D.	N.D.
Caryophyllene Oxide	N.D.	N.D.
Alpha Pinene	N.D.	N.D.
Limonene	N.D.	N.D.
Beta Caryophyllene	N.D.	N.D.
Alpha Humulene	N.D.	N.D.

### Fractions of Measured Terpenes

None  
Detected

### Calculated Liquid Chromatogram



This report and all information herein shall not be reproduced, except in its entirety, without the written consent of Steep Hill Halent. The report is for informational purposes only and should not be used to diagnose, treat, or prevent any medical related symptoms. Results are applicable only for samples tested, and for the specific tests conducted.

